



Project Partner 7



University of Modena and Reggio Emilia Department of Earth Sciences

Largo S. Eufemia 19, I-41100 Modena (Italy)
www.terra.unimo.it

main focus of institution and department

Higher Education, Earth System Sciences, Natural Hazards

short description of PP activities

Unimore is involved at a various extent on all project WPs, and is responsible for WP.3.1. Unimore will focus on Landslide Hazard and Risk. Activities will assure the compatibility of project products to landslide-management related issues.

short description of test area

The test bed is shared with PP5 – Autonomous Province of Bozen. It is the Trafoi (BZ province) area where active deep seated mass movements take place endangering lifelines and Trafoi village.

what does the partner bring into the project?

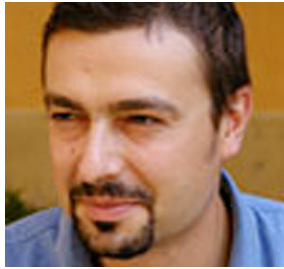
Expertise on landslide analysis and monitoring, hazard and risk assessment and mapping.

benefits for the partner by participation in the project

Share and broaden expertise, develop tools for better hazard and risk management, implement databases and maps for the test bed in order to develop risk scenarios.



main contact



Alessandro Corsini

Senior researcher in Engineering Geology. He is primarily involved in the study of large scale mass movements, with references to research topics such as geotechnical-geomechanical characterisation, on-site and remote sensing monitoring, hazard-risk assessment and mitigation. Research is carried out in the northern Apennines and in the Eastern Alps, in the frame of international and national projects, and research contracts with local end-users. He teaches in first and second level degrees in earth sciences and environmental engineering. He is author/co-author of about 50 papers.

Phone: +39 0592 058 260

Fax: +39 0592 055 811

alessandro.corsini@unimore.it